



MONITOR DISPLAY MODULE

Product Specification

Customer	Standard		
Product Number	DM-191BD-ONGR01		
Customer Part Number			
Customer Approval		Date:	

Internal Approvals		
Product Mgr	Doc. Control	Electr. Eng
Bazile Peter	Bazile Peter	Filip Kaczorowski
Date: 24/04/2018	Date: 24/04/2018	Date: 08/08/2018



Revision Record

Rev.	Date	Page	Chapt.	Comment	ECR no.
A	08/08/2018	--	--	Preliminary	
B	20/05/2019			Correction to the mechanical dimension and drawing	



Table of Contents

1.0 GENERAL DESCRIPTIONS	4
1.1 Introduction	4
1.2 Main Features	4
1.3 Scanning Frequency	5
1.4 Input Resolution [Analog RGB & DVI-D]	5
1.5 Input Signal	5
1.6 Power Supply Rating	6
1.7 User Controls	6
1.8 Key Button Function	6
2.0 MECHANICAL SPECIFICATION	8
2.1 Mechanical Characteristics	8
2.2 Mechanical Drawing	9
2.3 Block Diagram	10
3.0 OSD FUNCTION	11
4.0 ENVIRONMENTAL SPECIFICATION	12
4.1 Environmental Characteristics	12



1.0 General Descriptions

1.1 Introduction

This is a 19" bar cut Monitor, 1920 x 360 resolution, 16.7M colour, wide viewing angle, 250 nits brightness and a durable, professional mechanical design.

1.2 Main Features

Item	Contents
Screen Size	19"
Display Format	1920(H) x 360(V)
Colour	16.7M colours
Overall Dimensions	498.20 (W) x 118.00(H) x 45.00(D) mm
Active Area	476.64 (W) x 89.37 (H) mm
Pixel Pitch	0.24825 (H) x 0.24825 (W) mm
Viewing Angle	L/R: 89°/89° U/D: 89°/89°
Contrast Ratio	3000: 1 (Typ)
Brightness	250 CD/m2
I/O	1 x VGA, 1 x DVI-D
Backlight	LED
Mechanism	Bezel Frame
Operating temperature	0°C ~ +50°C
Storage temperature	-20°C ~ +60°C



1.3 Scanning Frequency

Item	Contents
Horizontal	31.5 ~ 80KHz
Vertical	50 ~ 75Hz

1.4 Input Resolution [Analog RGB & DVI-D]

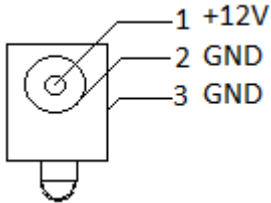
Item	Contents
Recommended Resolution	1920x1080@ 60Hz
Supported Input Resolution	640x480@60/72/75 Hz 800x600@56/60/72/75 Hz 1024x768@60/70/75 Hz 1280x1024@60/75 Hz 1920x1080@60 Hz

1.5 Input Signal

Item	Contents
RGB (VGA)	Analog RGB Amplitude: $0.7 \pm 0.05V$ Input Impedance: $75 \pm 2\% \text{ ohm}$ Sync: H/V Separate (TTL Level)
DVI	Swing Voltage: $400mV \leq V_{\text{sing}} \leq 600mV$ Termination Resistance: $50 \pm 10\% \text{ ohm}$

1.6 Power Supply Rating

Power Input (DC Jack, Ø2.5)

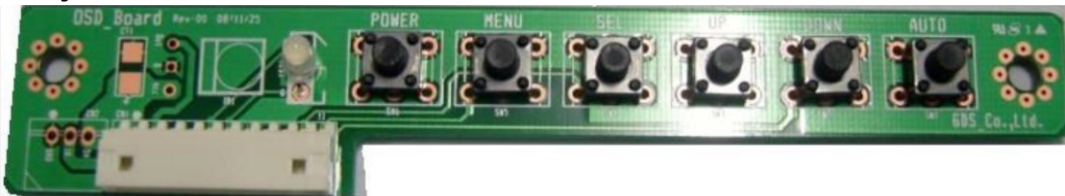


Item	Contents
Power Consumption	13.32 Watt (Typ.) @Set
DC Output	12Vdc 4.0A
AC input	100~240Vac

1.7 User Controls

Item	Contents
OSD Key Button	6 Key
OSD Language	English

1.8 Key Button Function



Button	Function
Power	Turns On/Off the system
Menu	Activates the OSD menu or Previous Menu, Exit
Select	Select input function (hotkey) or Sub Menu select
Up	Adjust Button/ Brightness & Contrast menu on Move the bar right to increase the Adjustment



	Move the main menu or sub menu Brightness & Contrast menu on
Down	Adjust Button/ Brightness & Contrast menu on Move the bar left to increase the Adjustment Move the main menu or sub menu
Auto	Adjustment RGB(Hotkey), disabled main menu

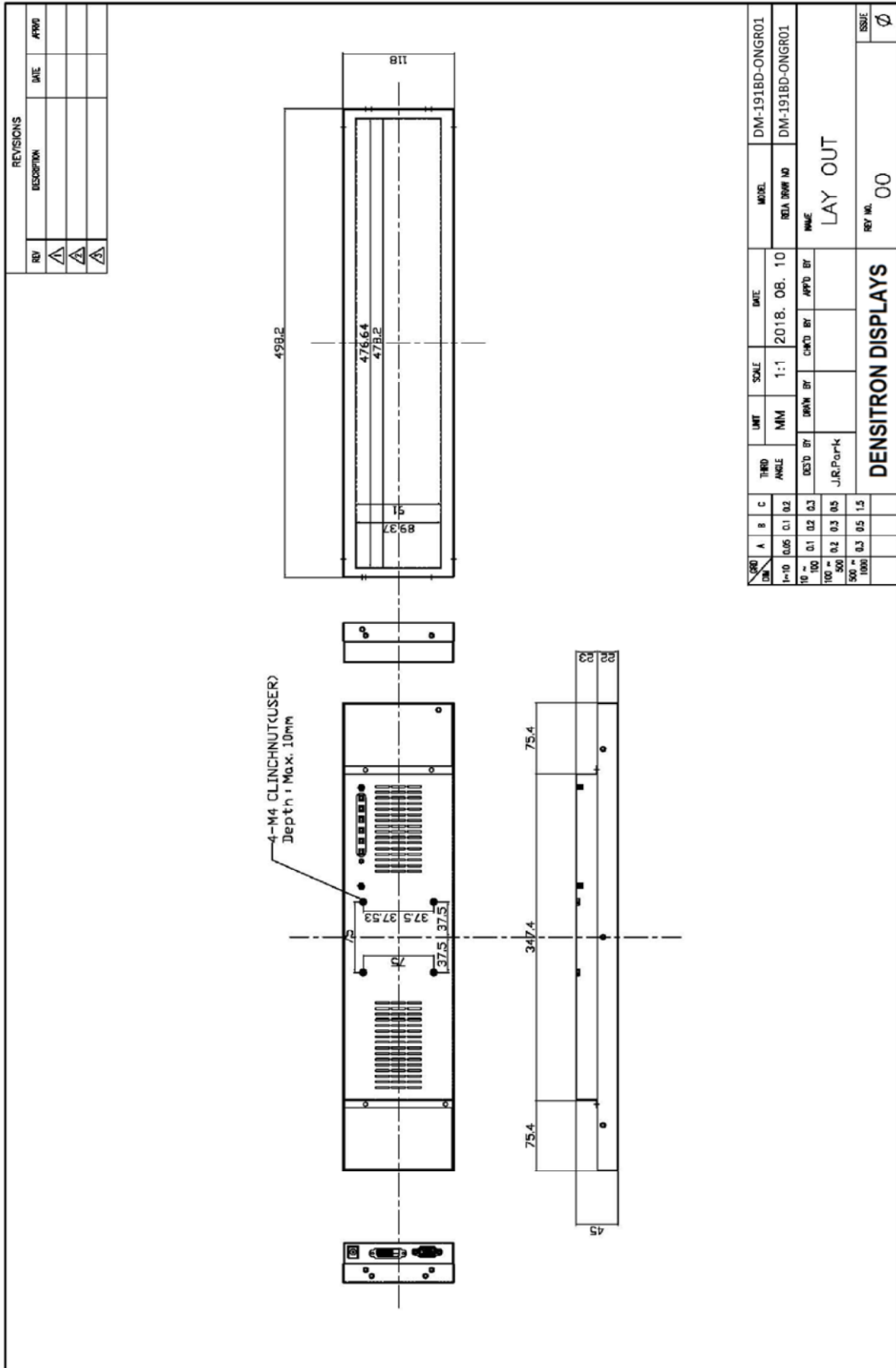


2.0 Mechanical Specification

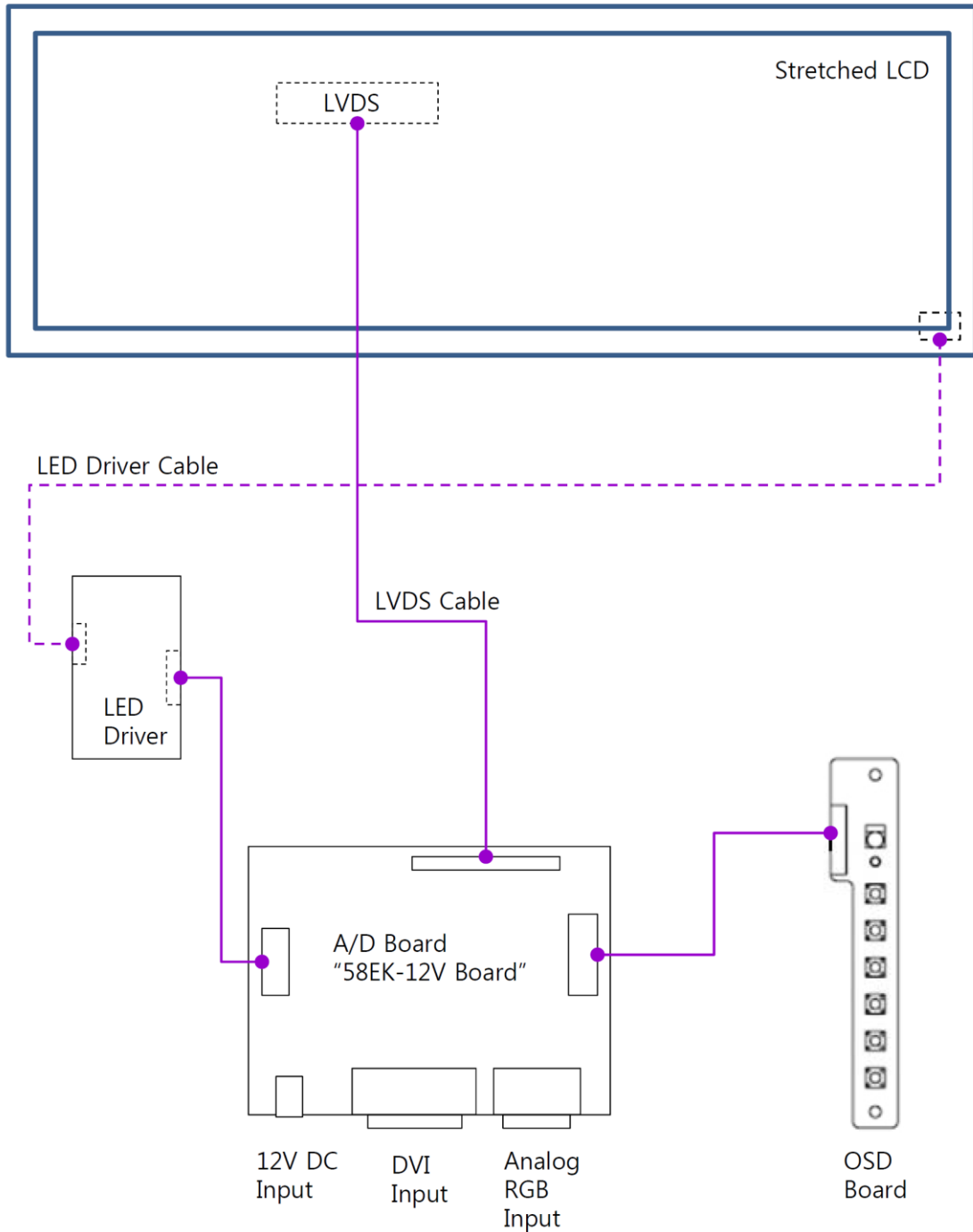
2.1 Mechanical Characteristics

Item	Characteristic	Unit
Display Format	1920(H) x 360(V)	Dots
Overall Dimensions	498.20 (W) × 118.00(H) × 45.00(D) mm	mm
Active Area	476.64 (W) x 89.37	mm
Display colour	16.7M	

2.2 Mechanical Drawing

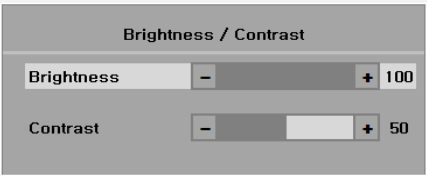
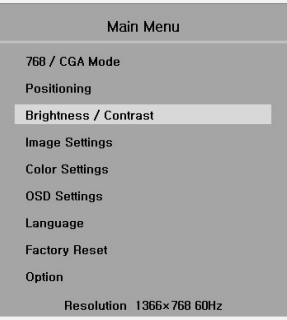
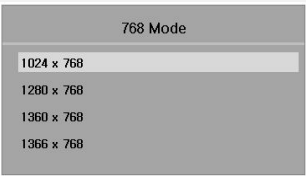
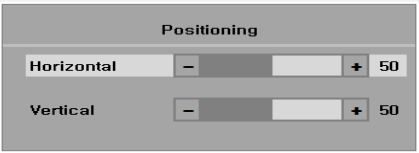
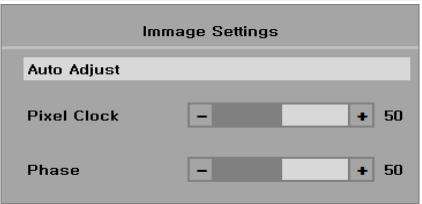
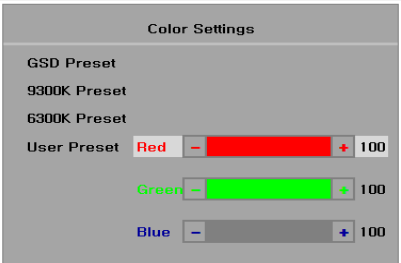


2.3 Block Diagram





3.0 OSD function

Menu	Pictures	Function
Brightness/Contrast		Brightness: Adjust Back Light Brightness Contrast : Adjust the Contrast
Main Menu		Adjustment menu contents
768Mode		+PC Resolution Pre-setting in Vertical 768Lines
Positioning		Move the image position the right, left, up, down side
Image Setting		Auto Adjust: Adjust clock, phase of display Automatically Pixel Clock: Adjust the clock(frequency) of the screen Phase: Adjust the phase of the screen
Color Setting		Adjustthe color temperature : sRGB, 9300K, 6500K User Preset : Adjust color gain, Red/Green/Blue



Menu	Pictures	Function
OSD Setting		H.Pos: moving the horizontal position of OSD menu V.Pos: moving the Vertical position of OSD menu OSD Hold time : Adjust the OSD off timer
Language		Select a language for OSD menu
Factory Reset		Factory-reset data is restored

4.0 Environmental Specification

4.1 Environmental Characteristics

Item	Remark
Operating Temperature	0°C ~ +50°C
Storage Temperature	-20°C ~ +60°C
Humidity	5~90% @ 40°C, non-condensing