



Clip Factory
PRO



CLIP FACTORY PRO

CLIPS FOR SOCIAL AND OTT

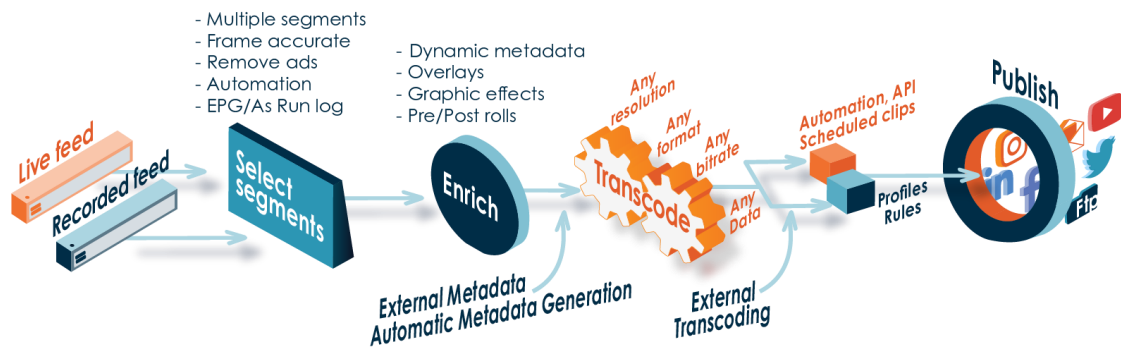
FAST CONTENT TURNAROUND

ACTUS CLIP FACTORY FOR CONTENT RE-PURPOSING:
CREATE AND PUBLISH CLIPS TO WEB PORTALS, FACEBOOK,
YOUTUBE, TWITTER, AND INSTAGRAM
QUICKLY AND EFFICIENTLY, MANUALLY AND **AUTOMATICALLY.**



WORKFLOW

Clip Factory is an “all-in-one” workflow for clips editing and publishing. It records any linear or internet feed, archives the content for as long as required, and provides tools to create and edit the clips, add logos, graphics and effects, extract and add metadata, transcode the clip to the desired format and distribute the content to any destination: social media, OTT or web portals. The workflow is simple to use, fast, does not require professional editing skills and can be operated from any client's machine. The deployment can be an on-premises, virtualized (VM), cloud based, or hybrid.



RECORD

MULTIPLE QUALITY RECORDING

Clip Factory records in any bitrate and resolution, from low resolution up to Full HD, and in multiple qualities. It allows users to work with the low-resolution copy for minimal network loading and faster response times, while the resulting clip is executed from the high-resolution copy.



Clip Factory
PRO



RECORD FROM ANY INPUT, ANY FORMAT, ANY RESOLUTION

All audio and video formats and interfaces are supported — SDI, ASI, IP/TS, HLS, MPEG-DASH, RTMP, ST2110/ST2022-6/7 (SMPTE), HDMI, DVB, analog, FM, AM, and more. All resolutions are also supported.

STORAGE

Any storage can be used: Local, central, DAS, NAS, SAN, or Cloud.

EDIT

CREATE A SUMMARY CLIP (HIGHLIGHTS)

After loading a program into the video editing interface, users can add any number of mark-ins/outs to video parts. Each of these parts can be easily included or excluded from the clip.



CLIP FACTORY PARTS MANAGEMENT:

add any
metadata to
each of the clips
highlights (parts)

NEAR LIVE CLIPPING

Start editing clips during live broadcast and be sure they will be published as fast as possible.



ADS REMOVAL

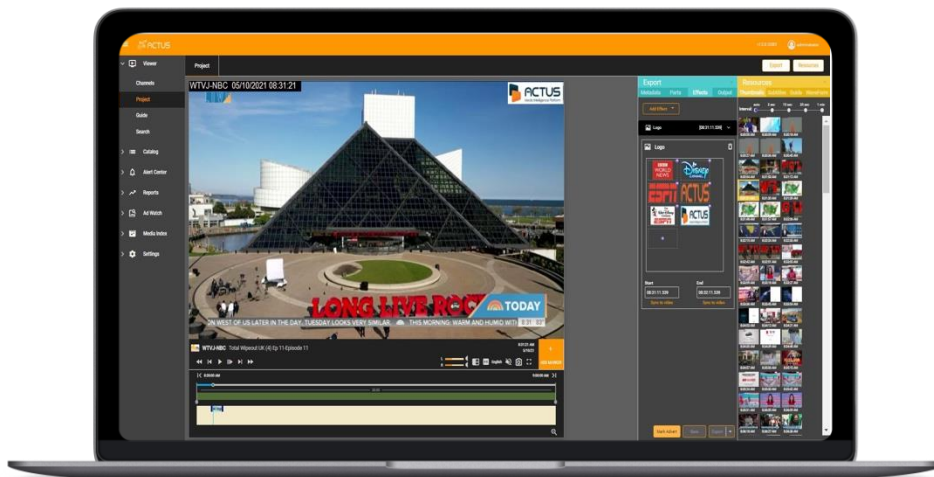
Easily remove commercial breaks and promos and join several parts into a single highlight clip.

ADVANCED EDITING OPTIONS

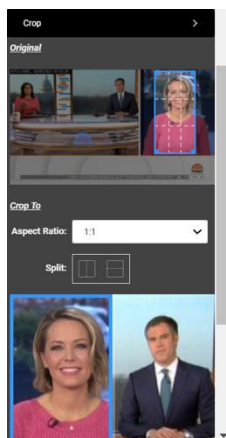
- Cut-to-cut editing
- Cut multiple segments into parts
- Frame-Accurate

SPECIAL EFFECTS

Add effects to clips, such as animated logos, pre/post rolls, cropping, graphics, text, animations, blurs, muting, or date and time stamps.



Easily add special effects to the clip, use pre-defined profiles, and export to social media



Cropping option – any aspect ratio, ability to crop multiple areas and rearrange them for the output clip

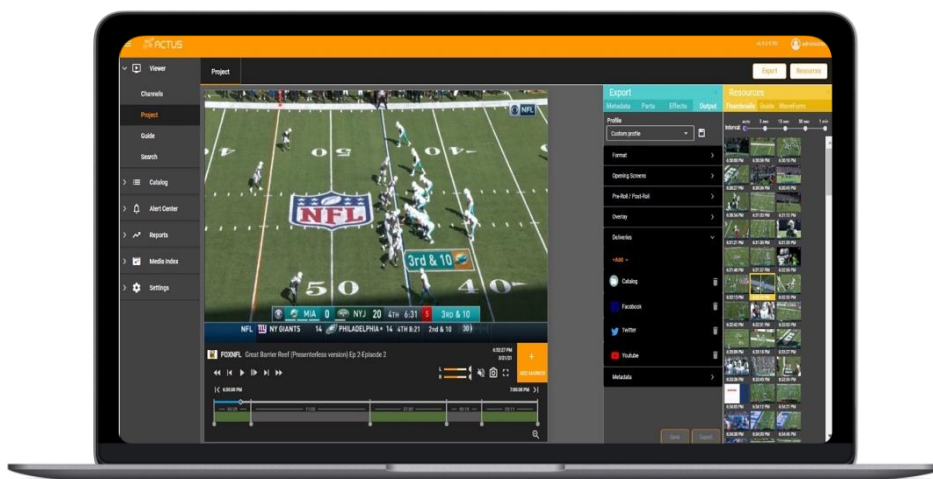


EASY NAVIGATION

Find the exact positions to be edited by using the smart player options: Slow motion, smooth fast forward and rewind at different speed rates, interactive storyboard presentation, and scrubbing. Using special keyboard shortcuts while editing gives additional options for faster video navigation.

METADATA

View customized metadata at both the clip and part level, and easily search on the different metadata fields. The associated metadata can be exported as part of the clip.



Easily mark-in/mark-out the segment parts to be included and excluded from the clip; advanced metadata editing and interactive story board

CLOSED CAPTION, MULTIPLE SUBTITLES, TELETEXT, AUDIO TRACKS

All can be exported as part of the clips or as a separate layer, whichever best suits the clips-viewer's experience.



TRANSCODE

TRANSCODE TO ANY FORMAT

Using an advanced built-in transcoding engine, clips can be exported in any format, bitrate, and resolution.

THIRD PARTY ENCODERS

Clip Factory can integrate with any third-party encoder, such as Telestream, Elemental, and Atime. The integration uses the third-party API and is seamless to the user.

DELIVER

DELIVERY TO SOCIAL MEDIA

Direct publishing to social media: Facebook, YouTube, Twitter, and Instagram.

OTT AND WEB PORTALS

Export the clips directly to any OTT platform or web portals.

CATCHUP-TV, VOD

Manual or automated clips creation for VOD and Catchup TV.



Clip Factory
PRO

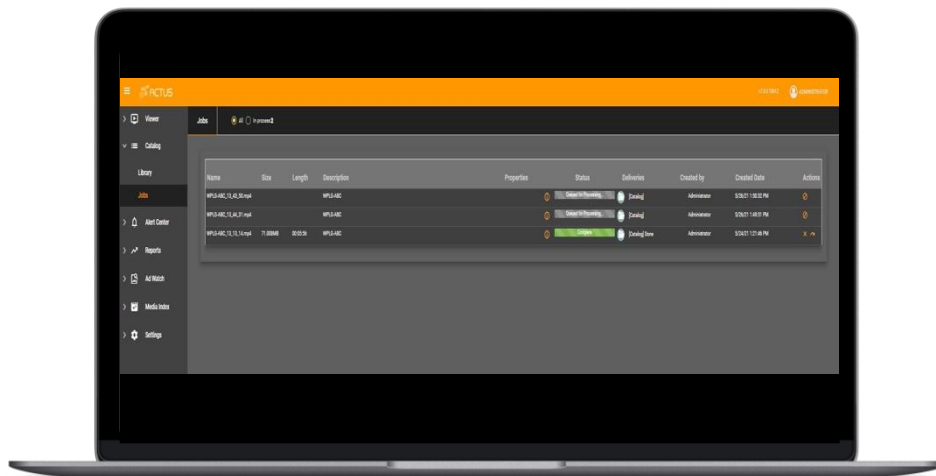


OR ANY DESTINATION

Deliver the clips to any destination such as FTP, Network share, CDN, DVD, as well as to the internal catalogs.

RELIABLE CLIPS DELIVERY

Receive delivery status notifications to guarantee that all the clips have been created and delivered.



Details on the clips and the delivery status



CLIPS AUTOMATION

PRE-DEFINED PROFILES

In order to increase the speed and efficiency of the clip's creation, the properties of the exported clip can be defined and saved in "profiles". Each profile defines format, bitrate, resolution, clips destination, metadata, effects to be included, overlays etc. Any number of profiles can be defined, per user/group base.

CLIPS AUTOMATION

Automated workflow options save human resources, shorten the distribution time, and ensure the clips reach their final destination as fast as possible. Automated options include scheduled clipping; continuous clipping for any time period (for example, creating one-hour clips and exporting them to a defined location); daily clipping of specific programs; and more.

AS RUN LOG FILES FOR AUTOMATION

Automatic mark-ins/outs based on the as-run log or any other data allow for automatic clips creation with defined logic, such as exporting all programs without the ads.

AI AND CLIPS CREATION

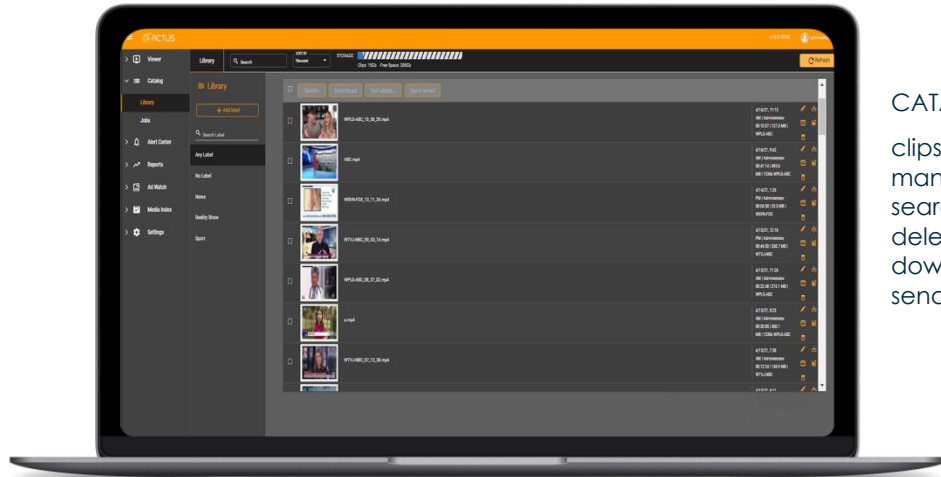
Full integration with AI engines such as speech-to-text allows clips automation workflow based on spoken words and keywords alerts.



GENERAL

INTERNAL CATALOG

Clips management for categorizing, editing, and advanced searching.



CATALOG:
clips management:
searching, editing,
deleting,
downloading,
sending as mail

SIMPLE TO USE

There is no need for a professional editor to create and export clips.

ALL IN ONE

There is no requirement for additional human resources or other systems resources: one solution gets it done.

SAVES COSTS

Clip Factory incorporates video recording, editing, metadata, transcoding, and delivery into a single streamlined solution. With no need for professional editors, special workstations, or 30-minutes training sessions, it offers a cost-effective alternative to various combinations of capture and encoding, video editing, transcoding, and delivery solutions – integration that is complicated, time-consuming, and expensive.



NO CLIENT INSTALLATION

Fully web-based, there is no need for any client/plug-in installation. Clip Factory works from any client (PC, Mac, iPads, and smartphones) and can be accessed from any connected workstation, within the organization or remotely.

ON PREMISE, VM, CLOUD, HYBRID

Clip Factory can be used as an on-premises solution, virtualized on any Windows-based VM, or run on any cloud platform, such as AWS, Azure, and Google Cloud. Fully web-based, there is no need for any client/plug-in installation.

UNLIMITED NUMBER OF USERS

Clip Factory allows an unlimited number of simultaneous users to work with the system without affecting the performance. Load balancing options are available.

UNLIMITED NUMBER OF CHANNELS

With Clip Factory, an unlimited number of channels can be managed. This scalability assures that additional channels can be easily added, without interrupting the user's work.

CHOOSE WHAT YOU NEED

Clip Factory is available in three levels. This allows organizations to lower costs and simplify the user experience by only choosing the options they need. (Note: the basic compliance clips option, named Quick Export, includes all that is needed for compliance clipping). Below are more advanced clipping options for users requiring more than basic compliance.



AVAILABLE FEATURES TABLE

Feature/Available in	Clip Factory Pro
Using Actus View database of recorded media	✓
Web-based – no client software is required	✓
Metadata	✓
Dynamic metadata, predefined values, autofill	✓
Legal compliance clipping: With closed captions/subtitles/teletext, audio tracks, loudness, time stamps (TC)	✓
Professional large-scale clipping / load balancing	✓
Automatic interactive storyboard with zoom options	✓
Scrubbing/fast forward/rewind/frame by frame, slow motion, mouse over, for mark-in/out	✓
Automatic interactive waveform presentation for mark-in/out	✓
Display as-run log, searchable, clickable, used for navigation and mark-in/out	✓
Display closed captions, subtitles, and teletext, searchable, clickable, used for navigation and mark-in/out	✓
Advanced cut-to-cut clips editing (multiple mark-in/out)	✓
Frame-accurate clips	✓
Timeline zoom options	✓
Add text overlays, in addition to time stamps: any text, content ID, etc. in any position	✓
Add text opening screen for a selected time duration (before or after the clip)	✓
Add pre-Roll (video) and post-roll (video) to the clip	✓
Keyboard shortcuts, jog,	✓
Add one or multiple logos/any graphics/animation to the clip, in any size and shape	✓
Blur one or many region of interest(ROI) within the clip, with selection of transparency for specified time duration	✓
Mute one or multiple parts within the clip, for a specified time duration	✓
Multiple mark-in/out (multiple parts) in the clip. Include or exclude each part	✓



Clip Factory
PRO



Cut parts automatically, remove parts (e.g. ads), using metadata from EPG, as-run log, triggers (e.g. SCTE-35, SCTE-104)	✓
Customized metadata and thumbnail for each part of the clip	✓
Export in any bitrate, resolution, and file format	✓
Catalog (mini-MAM) for clips management	✓
Possibility for local storage, central storage, cloud	✓
Export all metadata in an XML file	✓
Create profiles (bitrate, frame size, file format, destination, etc.) on a per-user basis	✓
Clips automation based on schedule, as run	✓
Clips automation based on rules	✓
Cropping options – one or multiple crops	✓
Automated clipping and distribution using scripts, hot folder	✓
Single click export to multiple destinations: FTP, network share and internal catalog	✓
Direct export to Facebook/YouTube/Twitter/Instagram	✓
AI integration for automatic clips creation based on keywords, images, etc. (requires Actus AI module)	✓

Other modules offered by Actus media platform:

Actus compliance logging and monitoring (View)

Actus OTT Monitoring

Actus Rating Analysis (Rating Analyzer)

Actus TS Analysis, Real time Alerts

Actus TS Native

Actus Automatic ads detection (AdWatch)

Actus AI integration

Actus Multiviewer (Mosaic)

Actus Content matching (Track Match)

Actus Remote Video Monitoring