



Compliance  
monitoring



# ACTUS VIEW

## COMPLIANCE RECORDING AND MONITORING

**RECORD** TV, INTERNET, AND RADIO.

**MONITOR** CLOSED CAPTIONS, SCTE-35, SCTE-104, NAVE, PSIP, TELETEXT, SUBTITLES, AUDIO TRACKS, LOUDNESS, AND SCTE

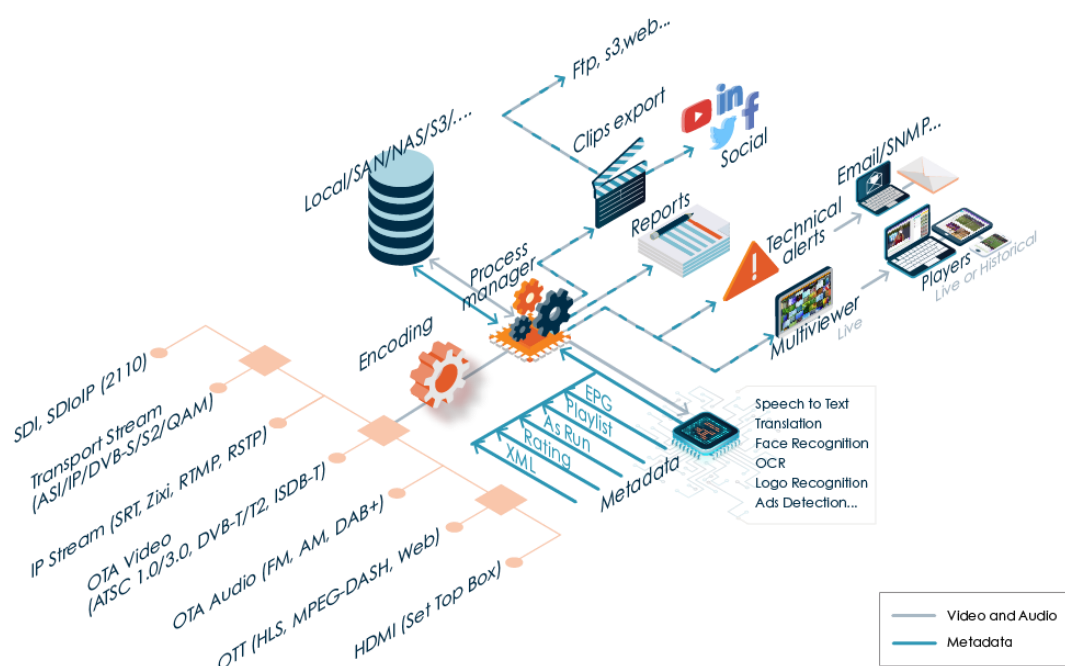
**EXPORT** CLIPS AND TECHNICAL MONITORING



## WORKFLOW

Broadcasters must ensure their aired content is logged and available online in order to comply with regulatory requirements, and be able to deliver specific content and relevant data to different parties.

Actus View records content 24x7 and archives it for any retention period. An intuitive user interface allows users to monitor live or archived content, search, create, and share clips quickly and effectively – from any desktop or device.





## COMPLY WITH ALL REGULATORY REQUIREMENTS

---

### SMART RECORDER

A reliable 24x7 recorder supporting large-scale video and audio recordings, Actus View includes a “watchdog” mechanism to ensure all media is being recorded properly, even in the case of an unexpected glitch.

### ANY INPUT/FORMAT/RES OLUTION

Capture any input, format, or resolution from a linear TV broadcast, the radio, or the internet.

- TS/IP, ASI, SDI, ST2110/ST2022-6/7, DVB, HDMI, analog, HLS, MPEG-DASH, 8VSB, QAM, RTMP, AM, FM, etc.
- SD/HD/720p/1080p/1080i/UHD
- MPEG2/H.264/H.265, etc.

### CONFIGURABLE RESOLUTION

Save the media in any resolution and bitrate, from low-resolution up to Full HD. The recording quality can be set for each channel individually.

### AUDIO TRACKS

Extract and record an unlimited number of audio tracks, in any language. The smart player allows users to select the relevant language and export a clip with the specific audio track.

### SCTE

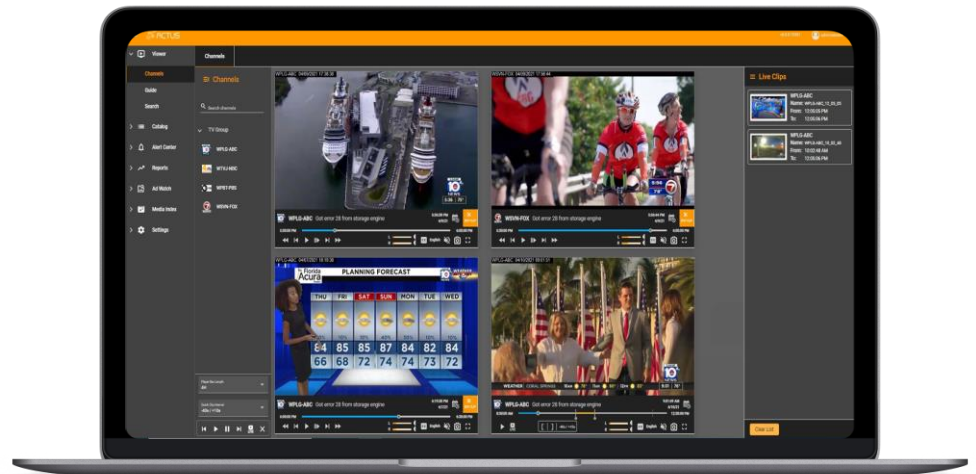
View allows users to extract SCTE-35 and SCTE-104. The SCTE messages are presented on an interactive timeline, for one or multiple live or archived channels. A summary list of all SCTE messages — synchronized with the timeline of the players — is also displayed. Once a specific SCTE command is selected, a detailed view of the SCTE packet's full information, including every field, will be displayed.



Compliance  
monitoring

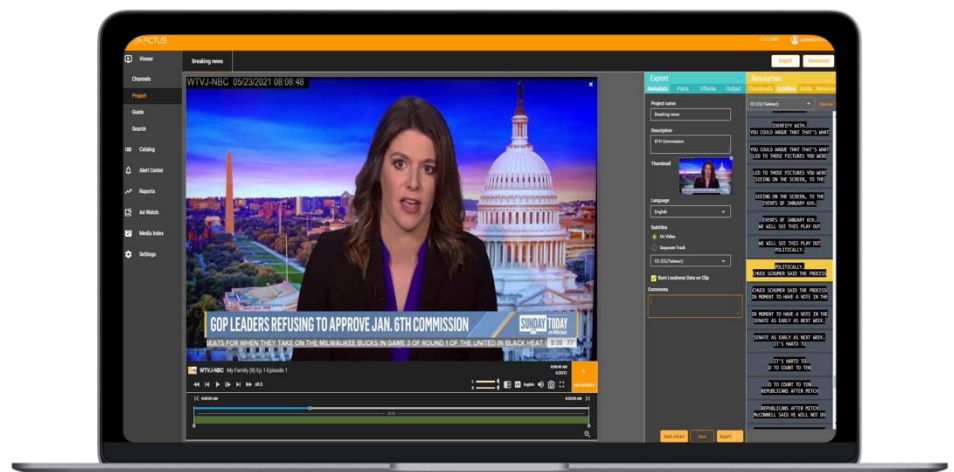


Users will receive alerts on missing SCTE, as well an option to export all SCTE messages.



ANY METADATA: DVB  
SUBTITLES,  
CLOSED CAPTIONS,  
TELETEXT

Recording DVB subtitles, any closed captions standard, or teletext, while being able to monitor it, is a mandatory requirement for users. Actus View extracts this data and allows users to search it and create clips with the relevant information. Closed captions or subtitles can be exported into a file or burnt onto the video.

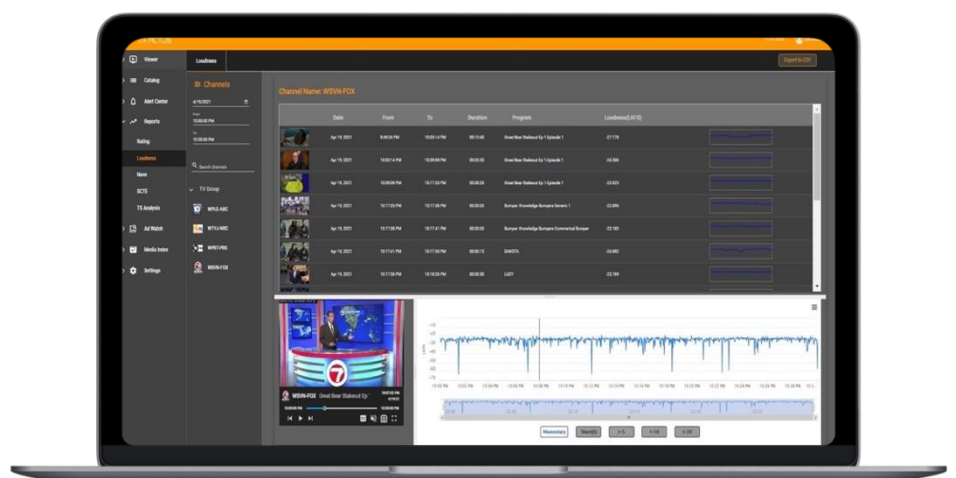




## LOUDNESS

The ability to completely monitor loudness values is fully integrated. View allows users to extract S, M, and I loudness measurements (LKFS), in accordance with the BS-1770 industry standard, and is also compliant with CALM and EBU-R-128. The average program loudness, range, and true peak are calculated and logged. Loudness measurements, combined with robust logging, allow users to quickly review the status and provide continuous, exportable measurements as proof of compliance and to defend against loudness complaints. The ability to export all loudness results, as text or burn-in on top of the video, is an inherent feature of the solution. Loudness violation alerts are enabled to assure full compliance with loudness regulations.

Actus displays the loudness values on a dynamic graph for a detailed analysis of the loudness information. The graph can be customized to show momentary, short, long, and average values. The graph is interactive and zoomable, and synchronized with the video player to provide a rich analytical experience.





## NAVE

Ensure the proper transmission and delivery of NAVE codes to Nielsen and other monitoring equipment (including alerts and reports).

## AI INTEGRATION

---

Actus has integrated a variety of video and audio analysis engines based on the most innovative AI technologies available and the market needs of broadcasters, large governmental entities, and defense and intelligence projects. For example, speech to text (transcription) integration is used for keyword alerts in different languages and for searching on spoken words.

Our AI integration is agnostic to the AI engine (vendors such as Microsoft, Amazon, and Google) or any other AI technology (speech to text, OCR, face recognition, brand detection, etc.). Integration with other engines is simple and based on the AI infrastructure already developed.

## ARCHIVING AND CLIPPING

---

### ARCHIVE

Nowadays content is saved at a higher quality over a longer period of time for repurposing. Actus' flexible and scalable archive takes advantage of any storage variant — local or central, NAS or SAN, or cloud — and can include an online archive and a long-term archive. Simultaneous users can access the archive, monitor the content, and create, edit, and export clips. The archive can contain media in both low- and high-resolution versions, allowing users to work with low-resolution content to save bandwidth

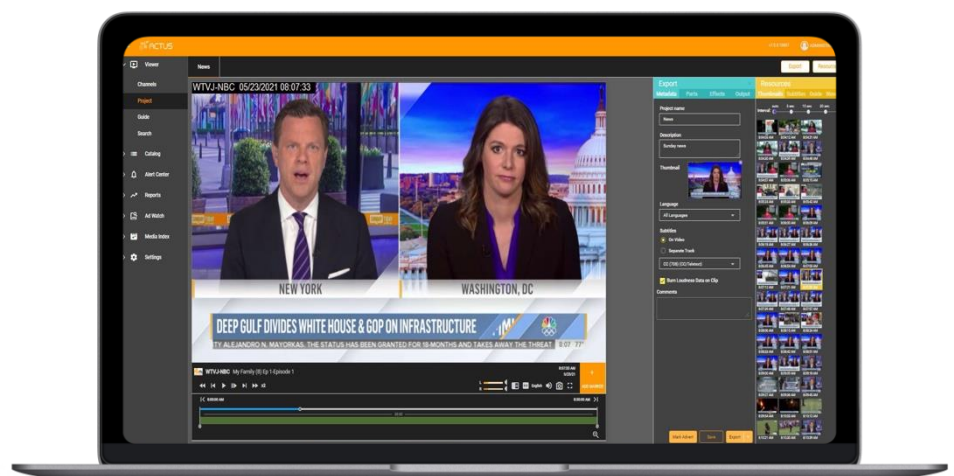


and facilitate remote capabilities, while creating clips from the high-resolution version.

### BUILT-IN CLIPPING EDITOR

A built-in clipping editor includes options to mark-in/out the content to be exported; add overlays such as date and time stamps; burn the loudness values; select the closed caption or subtitle language; and export clips with selected audio tracks. Clips can be transcoded to any format and exported to any destination, such as FTP, and network share.

For more advanced clipping options for fast content turnaround (including metadata, effects, cropping, export to social media, and more), please read about Actus Clip Factory Pro (<https://actusdigital.com/products/actus-clip-factory/>).

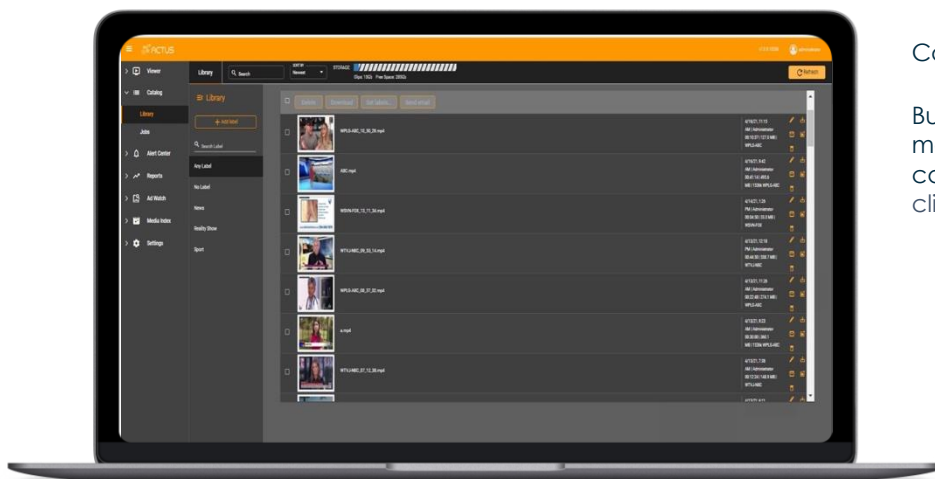






## BUILT-IN CATALOG

A built-in catalog helps users manage created clips by allowing them to search for a specific clip, edit it, send it via e-mail, download it, or delete it.



Catalog:

Built-in content management for categorizing and searching clips

A smart labeling system helps to arrange the media clips by subject, category, or any other criteria.

## SEARCHING AND METADATA

### SMART PLAYER

Users can monitor the content, either live or archived, from an intuitive player. All playback controls are available – stop, pause, fast forward and rewind at different speeds, slow motion, frame-by-frame, mouse over, and scrubbing – to assure fast navigation.

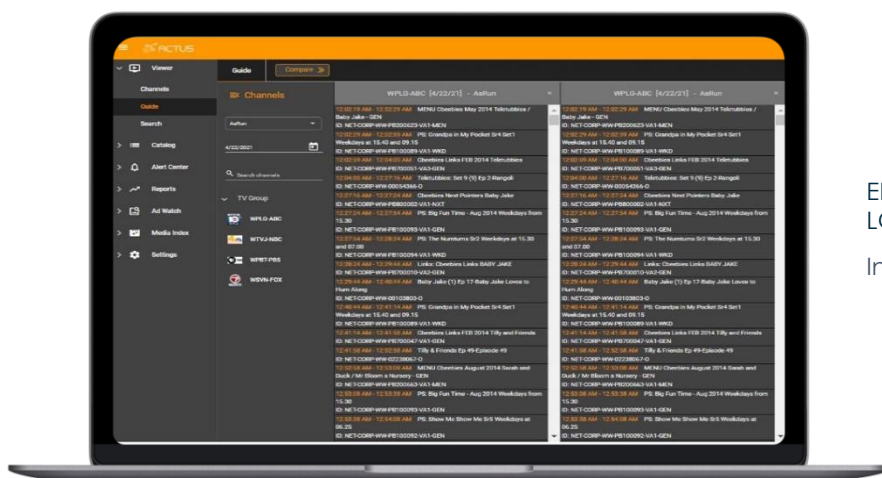
### EPG/As RUN/ SCHEDULE

Integration with any EPG/as-run log/schedule is another tool for searching and finding specific content. The EPG can be extracted directly from the stream, and View allows the playing or clipping of relevant content directly from the EPG or as-run log. Any format is supported.





Compliance  
monitoring



EPG/AS-RUN  
LOG/SCHEDULE  
Integration

## AS-RUN LOG AND SCHEDULE COMPARISON

Actus integrates and compares the As-Run and scheduled files, and provides reports of any discrepancies between the planned and aired content. For example: a commercial that was not aired or was aired at a significantly later time would be reported.

## INTUITIVE UI

A modern, web-based user interface with easy-to-use features allows users of any skill level to access the content immediately and start working.

## EASY NAVIGATION

A special design allows users to find content as fast and accurately as possible:

- **Scrubbing:** Users simply click and drag the playback progress bar marker until they see the content they are looking for



- Control buttons include fast forward and rewind at any speed rate, slow motion, and frame-by-frame. The control buttons can be used for one video player multiple players
- Users can move their mouse to any place on the playback progress bar and receive an immediate thumbnail preview of that location
- Storyboard: Navigate through video content using an automatically generated thumbnail storyboard
- Matrix view: Display multiple video windows in parallel, utilizing live or stored content, or any combination
- PIN options: Users have the ability to “Pin” specific channels on the left side of the UI



#### EASY NAVIGATION

Easy navigation with a storyboard allows users to find the exact content they are looking for



## EASY EXPORT AND SHARE

---

### EXPORT TO ANY DESTINATION

Easily mark-in and mark-out the desired clip for quick exporting and sharing. The clips can be transcoded to any format, bitrate, and resolution, or exported in the same recording settings. Overlays such as date and time stamps can be easily added to the clips.

### QUICK EXPORT

Easily distribute to FTP, network share, web, DVD, OTT, and social media. Content sharing becomes easy and fast.

## ALL-IN-ONE PLATFORM

RECORDING, ARCHIVING, MONITORING, SEARCHING, EDITING,  
TRANSCODING, AND DELIVERY

RECORD AT ANY LOCATION

ACCESS THE CONTENT ANY TIME, FROM ANY DEVICE, FROM ANYWHERE



## BUILT-IN TECHNICAL MONITORING

---

Actus View provides powerful audio/video quality monitoring, with real-time alerts for issues such as frozen image, low audio, color bars, pixelization, no audio, and blue screen. Other alerts include missing closed captions and SCTE, loudness issues, and more.

Actus Alert Center allows the technical team to solve issues right away. Alerts can be given on the screen, via e-mail, or through SNMP. The alerts are logged and filtered reports can be exported (with graphs, pie charts, etc).

## WEB-BASED APPROACH

---

The HTML5-based platform works on any browser — while guaranteeing compatibility with future browser versions — can be accessed from any PC, Mac, iPad, or smartphone, and doesn't require client installation.

The user interface utilizes the latest technology:

- Latest UI technology, higher performance
- Compatible with all the latest (and future) browsers: Chrome, Safari, Firefox, Microsoft Edge, etc.
- Most secure (latest) web-based infrastructure
- Same user experience on all browsers/platforms
- No downloads, no plug-ins
- Multi-language UI



## CLOUD-BASED VIRTUAL MACHINE

The server side can be an on-premises, VM, cloud-based, or hybrid solution.



On-premises



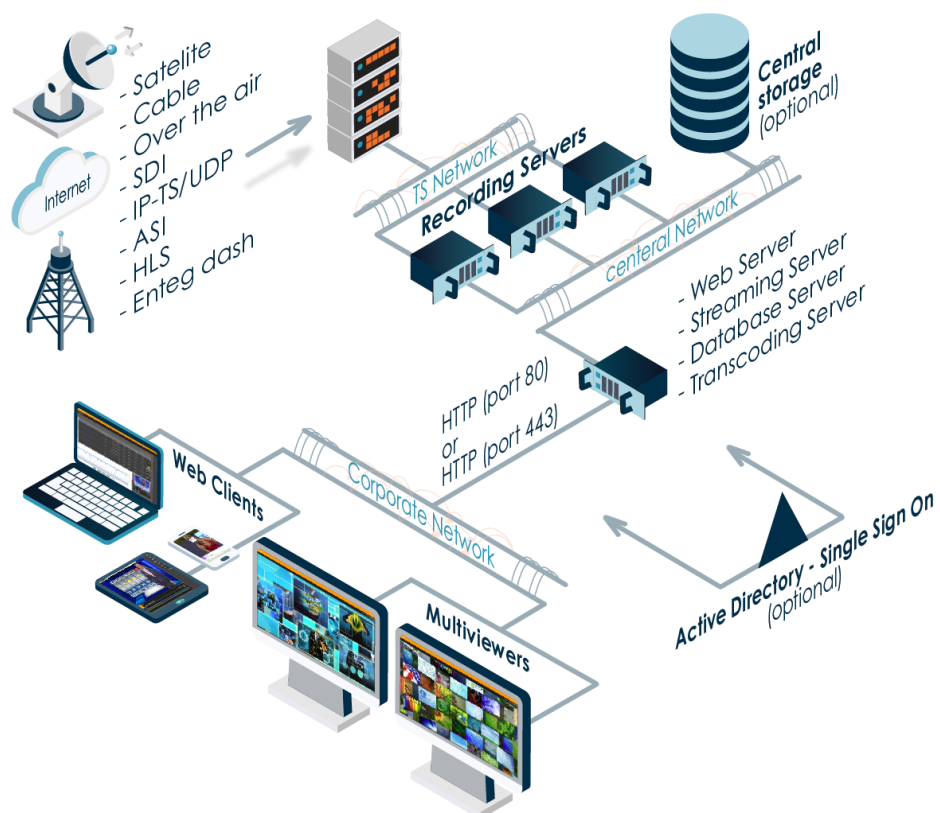
Cloud



Virtual machines



Hybrid





## ACTIVE DIRECTORY

---

Seamless integration with Active Directory provides a single sign-on experience for users. Once logged into their AD server, they will automatically inherit the rights and privileges when connecting to Actus.

Actus also integrates with any SAML 2.0 Identity provider, like OKTA. Users will need to log in once, while the administrator retains full control over user rights management.

## USER RIGHTS MANAGEMENT

---

The administrator can define user groups and the rights of each group, or the rights of each individual user. These rights define what each group or user is permitted to do or see. Additionally, the administrator can configure a "non-active time" in which users have not performed any activity in the system. The application will be disconnected automatically after this period of time to avoid overloading the network with video streaming while there are no user activities. The administrator can also force the disconnection of specific users if needed. Users' detailed activities log files are available.

## SCALABILITY

---

Adding more recording channels, regions, users, or new software modules is simple and fast. The expansion will not interrupt users' work.



## HIGH AVAILABILITY/REDUNDANCY

---

In order to guarantee there is no loss of media under any circumstances, and that users can continuously work within the application, high availability options can be added. Such options include an N+M solution up to a full N+N architecture.

## NATIVE TRANSPORT STREAM RECORDING

---

In some scenarios, the transport stream (TS) also has to be recorded and saved in its native format. This is helpful for monitoring TS quality, saving CPU resources, and monitoring all TS services for further analysis. From the TS Native application, the TS can be monitored, including all services and metadata. The application allows users to select the program to be monitored from the TS, create clips using the Actus Proxy platform, export selectable programs, and transcode the exported clip to any format.

## FLEXIBLE HARDWARE

---

More than a "black box," the hardware is designed to fit each user's specific requirements, thereby optimizing costs. Practically any hardware brand can be used. To lower costs further, hardware can also be configured to support future expansions such as recording additional TV channels or adding new modules.

Other modules offered by Actus media platform:

Actus content re-purposing (Clip Factory)

Actus OTT Monitoring

Actus Rating Analysis (Rating Analyzer)

Actus TS Analysis, Real time Alerts

Actus TS Native

Actus Automatic ads detection (AdWatch)

Actus AI integration

Actus Multiviewer (Mosaic)

Actus Content matching (Track Match)





Compliance  
monitoring



Actus Remote Video Monitoring