

ACTUS VIEW

COMPLIANCE RECORDING AND MONITORING

RECORD TV, INTERNET AND RADIO. **MONITOR**
CLOSED CAPTION, SCTE-35, SCTE-104, NAVE, PSIP,
TELETEXT, SUBTITLES, AUDIO TRACKS,
LOUDNESS, **EXPORT** CLIPS FOR COMPLIANCE



WORKFLOW

Broadcasters must ensure their aired content is logged and available online in order to comply with regulatory requirements and be able to deliver specific content to different parties. Actus View records the content 24 x 7, archives it for any retention period and enables simultaneous users to monitor the live and archived content. An intuitive and simple user interface allows the users to monitor the content, search, create and share clips quickly and effectively – from any desktop or device.

WORKFLOW





INPUTS, FORMATS, METADATA EXTRACTION

SMART RECORDER

A 24x7 recorder that is reliable and supports large scale video recording. The recorder includes a “watch dog” mechanism to make sure that the recordings continue to record properly even in case of an unexpected glitch.

ANY FEED

Capture any input or any format from a linear broadcast, Radio or Internet.

(TS/IP, ASI, SDI, SMPTE, DVB, UHD, HEVC, HDMI, Analogue, HLS, MPEG-DASH, QAM, 8VSB, ETC)

ANY RESOLUTION

Save the media in any resolution and bitrate: from low resolution up to FULL HD. Recording quality can be set for each channel individually

AUDIO TRACKS

Extract and record an unlimited number of audio tracks, in any language

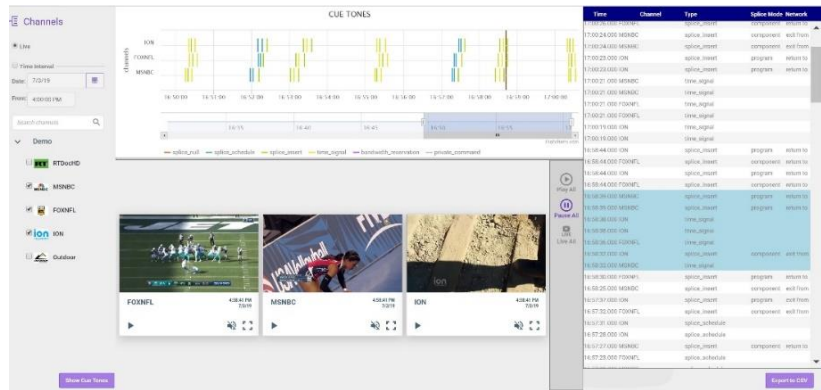
SCTE

Extract SCTE-35 and SCTE-104. The SCTE is presented on an interactive time line, one or multiple channels. A summary list of all SCTE messages is also displayed. The list is synchronized with the timeline of the players. Clicking on a specific SCTE command from the list, will open a detailed view window of that SCTE message. This will display the full information of the SCTE packets, including every field.

SCTE alerts are also given.



Record and View
Product Sheet



**ANY CAPTION:
DVB SUBTITLES,
CLOSED CAPTION,
TELETEXT**

Record DVB subtitles, any closed caption standard or teletext and being able to monitor it, is a requirement for broadcasters in order to comply with regulation and maintain quality of service. Actus View will extract this data and allow to search and create clips with the relevant data. The closed caption can be exported into a file or burnt on the video.

NAVE

Ensure proper transmission and delivery of NAVE codes to Nielsen/other monitoring equipment (including alerts and reports).

The screenshot shows the Actus software interface with a sidebar on the left containing navigation options like VIEWER, CATALOG, ALERT CENTER, REPORTS, LOUENESS, and SETTINGS. The main area displays a table for the 'ION' channel with the following data:

Date	From	To	Level	Sets (count)
Feb 5, 2019	9:00:00 AM	9:05:00 AM	FD: 1104 (1790) NT: 7307 (3), 4111 (3), 35997 (32), 52810 (3), 236 (19) PC: 236 (1495), 7307 (3)	
Feb 5, 2019	9:05:00 AM	9:10:00 AM	FD: 1104 (2176) NT: 35997 (3), 236 (48), 61474 (3), 53282 (3) PC: 236 (1789)	
Feb 5, 2019	9:10:00 AM	9:15:00 AM	FD: 1104 (2156) NT: 7307 (3), 61474 (3), 34470 (3), 61447 (3), 34480 (3), 53282 (10), 30397 (3), 34467 (3) PC: 236 (1833)	
Feb 5, 2019	9:15:00 AM	9:20:00 AM	FD: 1104 (1841) NT: 7307 (28), 53282 (32), 35397 (22), 30752 (4) PC: 236 (1746), 53282 (2)	
Feb 5, 2019	9:20:00 AM	9:25:00 AM	FD: 1104 (1889) NT: 1104 (26), 7307 (16), 46237 (3), 35397 (9), 236 (63) PC: 236 (1816), 1104 (9), 36292 (6), 1104 (6)	
Feb 5, 2019	9:25:00 AM	9:30:00 AM	FD: 1104 (2034) NT: 236 (28), 1104 (19), 61447 (4), 7307 (16), 35397 (11), 53282 (7) PC: 236 (1570)	
Feb 5, 2019	9:30:00 AM	9:35:00 AM	FD: 1104 (2372) NT: 34171 (3), 7307 (3), 61474 (7), 1104 (26), 15496 (3), 53282 (11), 53255 (3) PC: 236 (1458)	





NOT JUST A RECORDER

Actus View provides a robust set of tools, keeping in mind that your future needs may extend beyond any standard recording device or input.

ARCHIVING AND CATALOG

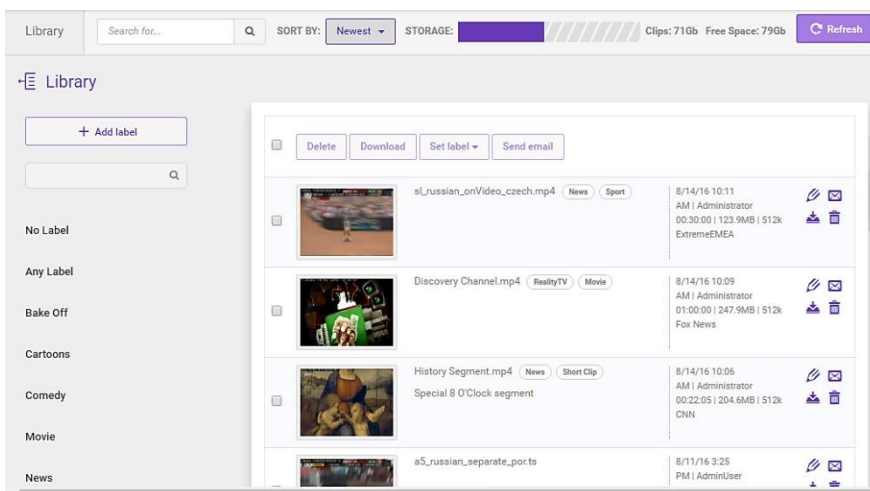
ARCHIVE

Nowadays the content is saved in increasing quality and for a longer period for re-purposing. The flexible and scalable archive can use any variant of storage: local or central, NAS or SAN or Cloud. The archive can include an online archive and a long term archive. Simultaneous users can access the archive, monitor the content, create, edit and export clips. The archive can contain the media in both low and high res quality. The users can work on the low resolution, to save bandwidth, and be able to work from remote sites, while the clips will be created from the high res copy.

BUILT IN CATALOG

A built-in catalog helps you to manage and control the clips. The catalog allows to search for a specific clip, edit, send it via e-mail, download and delete.

A smart labels system helps to arrange the media clips by subject, category or any other criteria.



Catalog:

Built in content management for managing, categorizing and searching clips



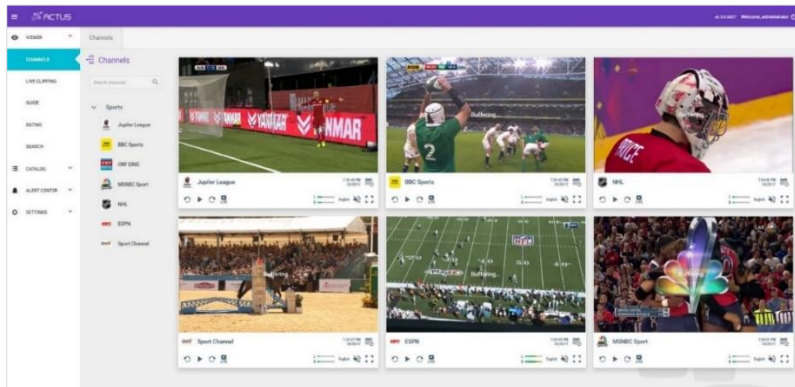
SEARCHING AND METADATA

SMART PLAYER

Monitor the content from an intuitive player - either live content or easily select content from a different date and time. All the playback controls are available: stop, pause, fast forward and rewind in different speeds, slow motion and frame-by-frame.

EPG/AS RUN LOG

Integration with any EPG/As run Log is another tool for searching and finding specific content. These files can be automatically loaded into the system, manually loaded or taken from the internet. It allows playing or clipping of the relevant content directly from the EPG or As Run Log. Multiple formats are supported.



MONITORING

Monitor multiple channels at the same time: live, archived, or any combination

INTUITIVE UI

A modern, web-based user interface with easy-to-use features allows users of any skill level to access the content immediately and start working on it. An average training session is 1-2 hours.

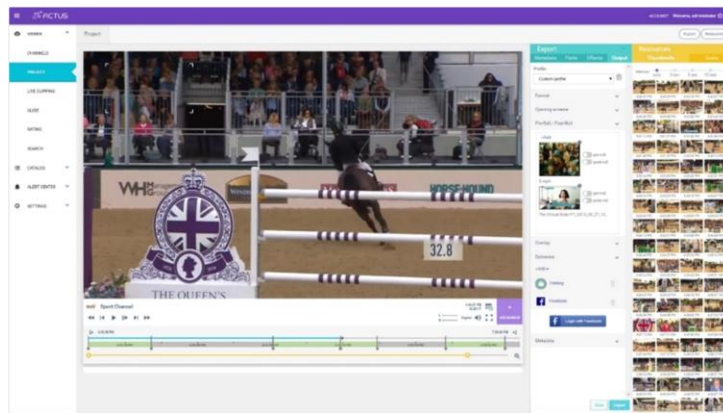
EASY NAVIGATION

Special design to allow the users to find the content as fast as possible and accurately:

- Scrubbing – simply click and drag the playback progress bar marker until you see the content you are looking for.



- Move your mouse to any place on the playback progress bar and receive an immediate thumbnail preview of that location and its timestamp.
- Storyboard – Navigate through your video content using an automatically-generated thumbnail storyboard.
- Matrix View – Display multiple video windows in parallel: live or stored content, or any combination.
- PIN options – ability to “Pin” specific channels on the left side of the UI



EASY NAVIGATION
Easy navigation with a storyboard – find the exact content you are looking for

EASY EXPORT AND SHARE

QUICK EXPORT AND SHARE

Easily mark in and mark out the desired clip for quick export and share. The clips can be transcoded to any format, bitrate and resolution or exported in the same recordings settings. Easy ways to add overlays to the clips such as date and time stamp.

DISTRIBUTION TO ANY DESTINATION

Easy distribution to FTP, Network share, DVD, OTT and social media. Content sharing becomes easy and fast.

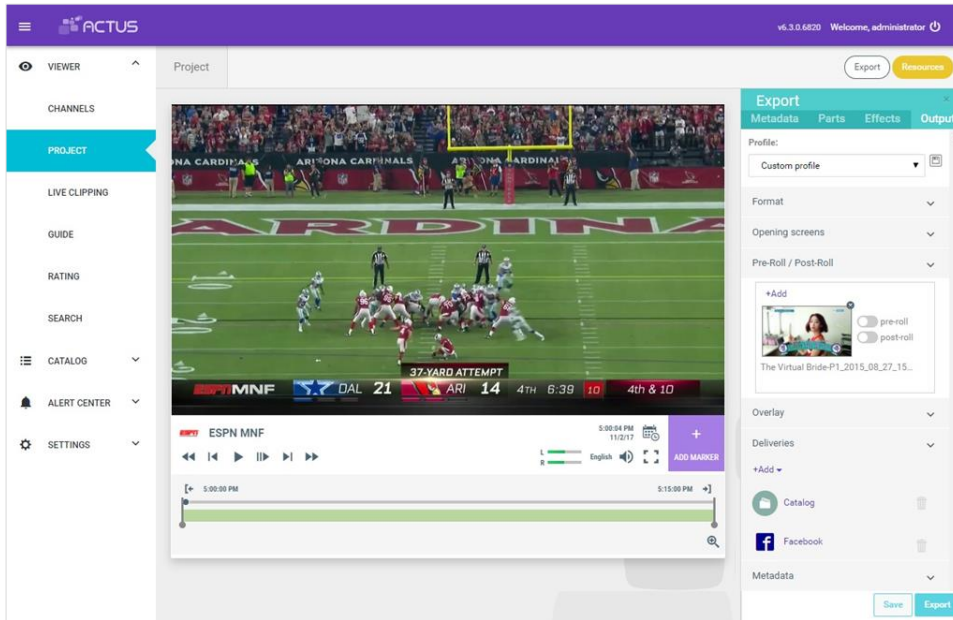
CENTRAL MONITORING

The system can record channels in different remote sites and from a central UI all the channels from multiple remote sites can be monitored.



Record and View

Product Sheet



QUICK EXPORT
Create and distribute
the clip: simply and fast



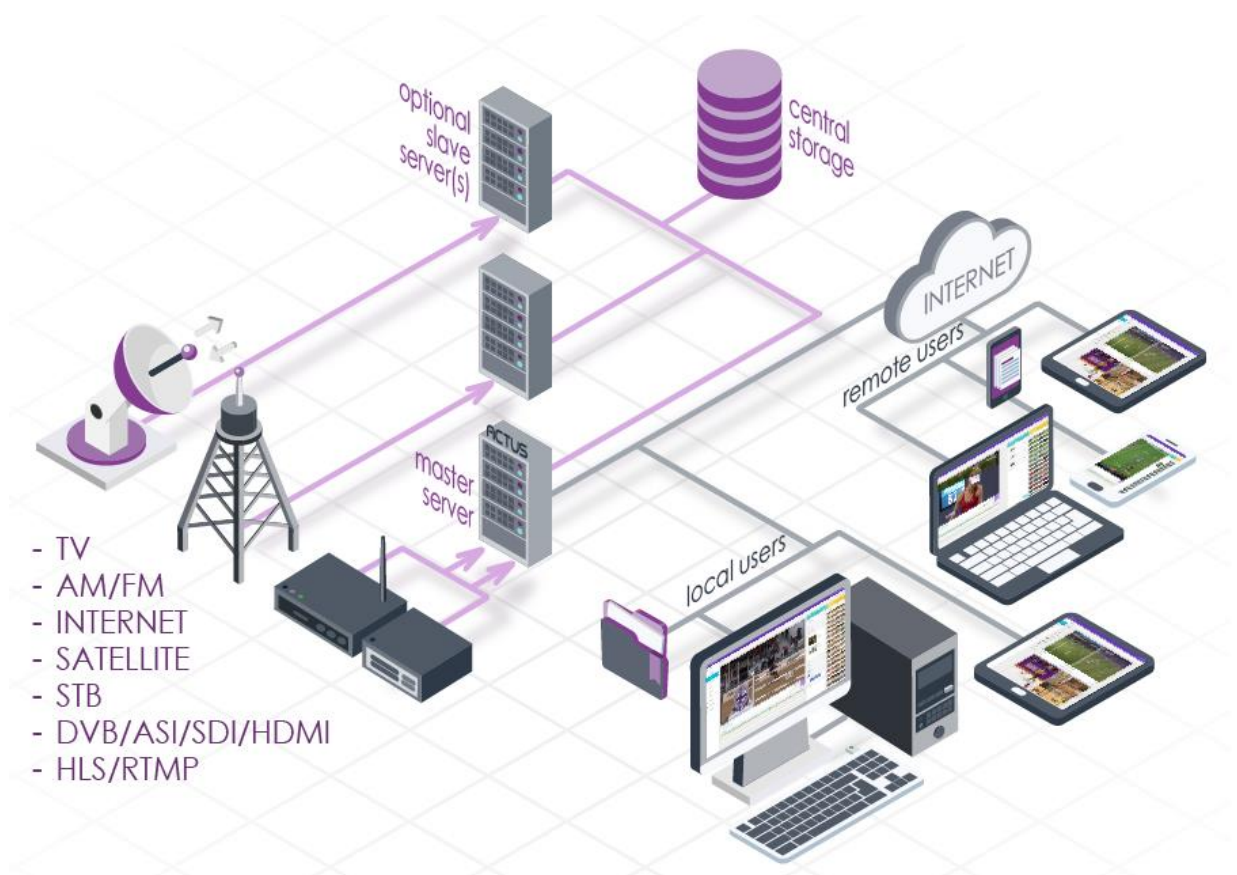
ALL IN ONE PLATFORM

CONTENT, ARCHIVING, RETRIEVING, SEARCHING, EDITING,
TRANSCODING AND DELIVERY - ALL IN A SINGLE SOLUTION.

RECORD AT ANY LOCATION

ACCESS THE CONTENT FROM ANYWHERE

ARCHITECTURE





BUILT IN TECHNICAL MONITORING

Powerful video/audio quality monitoring with logs. Real time alerts of audio and video issue such as frozen image, low audio, color bars, no audio, or blue screen, allows the technical team to solve the issue right away. Alerts can be given on the screen, via email or through SNMP.

LOUDNESS MANAGEMENT

The ability to completely monitor Loudness Compliance is fully integrated into Actus Loudness module. The Actus Loudness module lets operators maintain continuous measurements, which among other things, identifies program loudness and loudness range. Loudness measurements combined with robust logging allow users to quickly review the status and provide continuous, exportable measurements as proof of compliance and to defend against loudness complaints.

Only by providing complete information, like the Actus Loudness Meter does, including not only the 'Program Loudness' ('I') but also the 'Program Range' and the 'Program True Peak', can the sound engineer select the right mix of methods and make sure that the program is within the EBU\CALM Act specifications without compromising its sound quality.

WEB BASED

Access and work with the media platform from any PC, Mac, iPad or smartphones. The application is HTML5 based, working from the browser, and no client software is required. The HTML5 platform guarantees compatibility with future versions of the browsers.

VIRTUAL MACHINE, CLOUD BASED

The server side can also be a Virtual Machine (VM) or Cloud based



ACTIVE DIRECTORY

Active Directory (AD) integration allows users to log in a single time on the AD server, thereby eliminating the need for multiple logins across multiple servers. Once logged into the AD server, the user is logged in with the same credentials set by the administrator.

USER'S RIGHTS MANAGEMENT

The administrator can define groups of users and the rights of each group, as well as define the rights of each user individually. These rights define what each group or each user is permitted to do and what not. Additionally, the administrator can configure a "non active time", in which the users have not done any activity in the system. The application will be disconnected automatically after this period of time. This is to avoid overloading the network with video streaming while there is no users activities. The administrator can also force the disconnection of a specific user/s, if needed. Users' detailed activities log files are available.

SCALABILITY

Adding more recording channels, adding more users or adding new software modules is simple and fast. The expansion will not interrupt the users' work.

HIGH AVAILABILITY/REDUNDANCY

In order to assure no loss of media under any circumstances and assure the users' continuous work with the application, high availability options are needed. Such options can include N+1 solution up to a full 1+1 architecture.

NATIVE TS RECORDING

In some scenarios, the TS also has to be recorded and saved in its native format. This is helpful for monitoring the TS quality, to save CPU resources and be able to monitor all the TS services as they are originally aired. From the TS Native application the TS can be monitored, including all the services and metadata it includes. The application allows to



select the program to be monitored from the TS, can record selectable programs from the TS, allows to create clips from the TS Native or transcode the exported clip to any other format.



FLEXIBLE HARDWARE

Not a “black box” – the hardware is designed specifically to fit the specific requirements, thereby optimizing hardware costs. Practically any hardware brand can be used. The hardware can be configured to support future expansions of the system such as recording additional TV channels, adding more users or more modules and save future hardware costs.



FORMATS

Input Source	<ul style="list-style-type: none"> IP Transport Stream, Analog, Digital (SDI), ASI HDMI, ATSC, QAM, ISDBT/2, HLS, RTMP, UDP, MPEG-DASH, ST-2110, ST-2022-6, TSIP DVB-T/2, ASI, DVB-S/S2, DVB-C/C2 	
Input Bitrates	<ul style="list-style-type: none"> Video: 256 Kbps – 20 Mbps Audio: 64 Kbps – 1024 Kbps 	
Input Frame-sizes	<ul style="list-style-type: none"> QCIF (176 x 144) – UHD (4K) 	
Export Video Formats / Codecs	<ul style="list-style-type: none"> MPEG4 - H.264 VP8 MPEG2-TS - MPEG2 MPEG1 H.264 3GP - H.264 VP8 H.263 MPEG4 MOV - H.264 WMV - VC1 WMV v8 WMV v9 MPEG2 - MPEG2 AVI - DivX Xvid MPEG4 H.264 FLV SWF SVCD VCD DivX DVD DVD <p>Any other format can be added upon request</p>	
Export Audio Formats / Codecs	<ul style="list-style-type: none"> AAC M4A AMR FLAC MP3 	<ul style="list-style-type: none"> MMF MPEG2 OGG WAV WMA
Export Broadcast Quality formats	<ul style="list-style-type: none"> XDCAM HD422 files in .mov or .mxf XDCAM IMX/D-10 files in .mov or .mxf 	<ul style="list-style-type: none"> AVID DNxHD files in .mov ProRes 422 or 4444 files in .mov
Cue Tones / Triggers	<ul style="list-style-type: none"> Extracts SCTE-35, SCTE-104 	

Ver. 180313