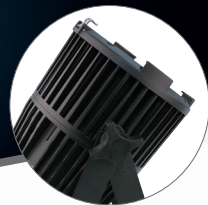
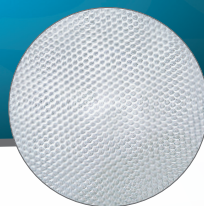




## Chroma-Q® Studio One 100



## Above PAR Performance from a White Source

The new Chroma-Q® Studio One 100™ LED PAR is designed to deliver the highest quality of white light from an LED based fixture, for the most demanding applications.

Utilising core LED technology from the Chroma-Q premium performance lighting range, the multi-purpose fixture is ideal for a wide range of environments and provides a powerful, creative lighting tool.

### Smooth, Homogenised Optics

The Studio One's custom optical design and fully homogenised output provides a smooth, uniform and defined 18° beam.

### Theatrical Grade Dimming

Theatrical grade dimming emulates the extremely smooth dimming curve of tungsten fixtures.

### Flicker Free Operation

The Studio One 100 offers adjustable dimming frequencies to ensure flicker-free operation on cameras.

### Multi-Purpose Workhorse Fixture

With the advanced feature set also including convection cooling for silent operation and a versatile mounting yoke, the Studio One 100 is suitable for numerous TV, film, studio, exhibition & entertainment lighting applications - complementing the popular Chroma-Q Studio Force™ and Studio Force Phosphor™ LED fixtures ranges.

### Convenient Remote-Controlled Operation

With a simple to use Infra-Red remote control included with each fixture, you can be up and running within minutes without the requirement of a lighting console - saving time and labour with instant access to pre-set colour temperatures, on/off, dimming and effects.

### Compatible With Industry-Standard Accessories

To enable maximum flexibility with users' existing production inventory, the Studio One accepts industry-standard 6.25" accessories such as egg crates, barndoors and top hats.

## Key Features

- Extreme white outputs
- Choice of daylight, variable and tungsten white CCTs
- Extremely uniform wash
- Fully homogenised beam
- Superior build quality
- Defined 18° beam
- High CRI
- Camera friendly - flicker free operation
- Floor, truss or wall mountable
- Convection cooled for silent running
- Theatrical grade dimming



Daylight



Variable



Tungsten



# Technical Specification

## Studio One 100 D V T Technical Specification

	Product Code
Studio One 100 <span>D</span>	CHSONE100D - IP20, powerCON & XLR 5-pin In/Out
Studio One 100 <span>V</span>	CHSONE100V - IP20, powerCON & XLR 5-pin In/Out
Studio One 100 <span>T</span>	CHSONE100T - IP20, powerCON & XLR 5-pin In/Out
Net Dimensions (Full Open Yoke)	214mm x 267mm x 232mm / 8.5" x 10.5" x 9"
Net Weight	3.8kg / 8.5lb
Shipping Dimensions	406mm x 228mm x 292mm / 16" x 9" x 11.5"
Shipping Weight	5.5kg / 12lb
Power Supply	Built-in
Input Rating	100-240V AC 50-60Hz 125VA
Power Factor	0.5
Typical Power & Current	Measurements done with all LEDs at max. intensity. Measurements made at nominal voltage. Allow for deviation of +/- 10%.

Power Consumption	60W @ 120V AC; 61W @ 230V AC
Idle Power Consumption	3W @ 120V AC; 5W @ 230V AC
Power Connectors In/Out	powerCON
Data Connectors In/Out	XLR 5-pin
Control Protocol	ANSI E1.11 USITT DMX 512-A
Cooling System	Convection
Operating Temperature	0°C to 40°C
Construction	Cast machined aluminium
Colour	Black (custom colours available on request)
Built-In Hardware	Split Yoke, 6.25" Accessory Holder
IP Rating	IP20
Approvals	CISPR 15/EN55015 & EN61547, FCC Part 15 Subpart B:2012 / ICES-003:2012, CSA C22.2, UL 1573, IEC 60598

## Studio One 100 D V T Control & Photometric

	Studio One 100 <span>D</span>	Studio One 100 <span>V</span>	Studio One 100 <span>T</span>
LED Engines	1		
LEDs Per Engine	Cold White	Warm White Cold White	Warm White
Control Modes	1 channel DIMMER, Master, Slave	2 channels CTI, 2 channels WW CW, Master, Slave	1 channel DIMMER, Master, Slave
Dimming Curve	Theatrical		
Wireless Control	On / Off Fade In Fade Out		

	Studio One 100 <span>D</span>	Studio One 100 <span>V</span>	Studio One 100 <span>T</span>
Hot Lumen Output (Combined)	2,500	2,100	2,200
Optics	Fully homogenised		
Beam Angle	18°		
Beam Distribution	Symmetrical direct illumination		
CCT	6,100K (+/- 200K)	3,000K - 6,100K	3,000K (+/- 200K)
CRI	82	86	82
Lamp Life	L70 at 50,000 hours		
Accessories Included	Wireless IR Remote Colour Frame		

For the latest news and information on the Chroma-Q range, visit [www.chroma-q.com](http://www.chroma-q.com)

In addition, follow us on Facebook. [chromaqlighting](https://www.facebook.com/chromaqlighting) 