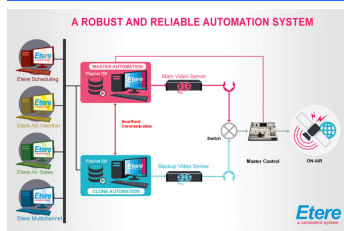


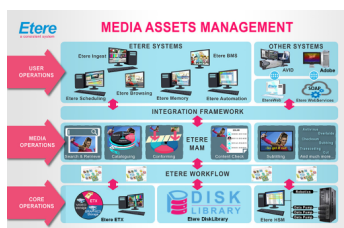
# ETERE AUTOMATION

Etere Automation is a scalable, flexible and reliable playout automation software. Etere Automation runs independently from Etere SQL Server database and offers different levels of fault tolerance for a truly powerful and reliable performance.



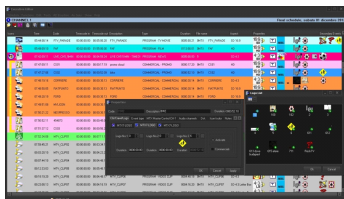
(Etere Automation)

**Etere Automation** is a powerful, reliable and modular playout automation system that is able to enhance broadcasters' potential in terms of functionalities and workflow design. Its unique approach combines real-time device control and media asset management in a single product, offering a powerful mix of solutions and capabilities. It is a system to fit all broadcaster needs. Etere Automation is able to transmit streaming events according to the videosever capabilities, and play in A/B switch mode and remote several devices among the large list of the supported ones, using network, serial, and GPI connections. In addition, Etere Automation database-independent capabilities enable different levels of fault tolerance, allowing it to run on Backup Mode, Master/Clone Mode, and Disaster Recovery Mode. Etere Automation's distributed architecture provides a system that can grow and change to fit all broadcaster needs. It runs on Windows and controls all the broadcast system devices. Etere Automation uses the database of Etere Media Asset Management to integrate all the activities in a single environment, thus allowing retrieval of assets stored in the station with no size limit, as well as to manage playlists and perform last minute changes.



## Key Features

- ♦ Integrated environment with a user-friendly interface
- ♦ Ingest system, common with [Etere Media Asset Management \(MAM\)](#), can be used for both archive and playout
- ♦ Start and end points on videos are stored in the system database
- ♦ Single segment, multi segment and multi spot are managed as a same database object
- ♦ Barcodes can be printed on catalogue tapes
- ♦ Ingest jobs can be automated to minimize operator work
- ♦ Live recordings are also supported and these can be manually triggered or pre-scheduled
- ♦ Play while recording is supported on every device
- ♦ Etere Automation runs independently from the Etere' SQL Server, ensuring a truly fault-tolerant and resilient performance
- ♦ Etere Automation is able to offer different levels of fault tolerance, with Backup Mode, Master/Clone Mode, and Disaster Recovery Mode with a distributed architecture that provides high redundancy for system failure
- ♦ Seamless workflows with [Etere ETX](#), [Etere Scheduling](#) and Etere Automation for real time content delivery

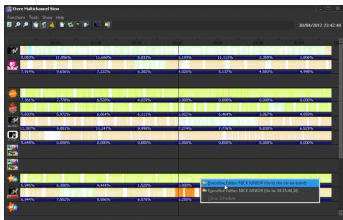
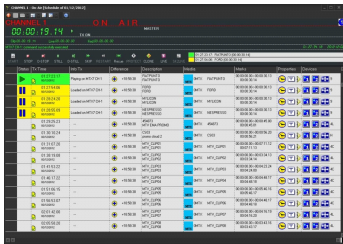
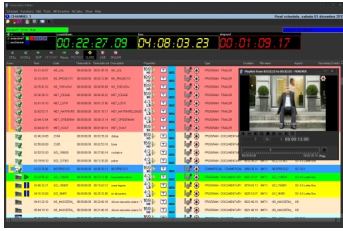


## Etere Browsing Player

**Etere Proxy Browsing:** allows different operators to access the same clip at the same time. It supports jog & shuttle functions. It can be accessed with a simple click from any point of Etere, including traffic and scheduling interfaces

**Parallel encoding:** You can use a PC to encode hires and low-res at the same time.

## PRODUCT 7/11/2018 ETERE AUTOMATION



**Transcoding:** Etere browsing includes an unlimited transcoder license, to produce browsing copies from the hires video

**Selectable bit rates:** Etere browsing/player allows you to choose any bit rate including different bitrates for different categories of video

**Unlimited license:** Etere browsing/player allows you to install any number of encoders, transcoders and browsing stations

**Etere Browsing:** Video recording works side by side with standard recording operations integrated with the other Etere tasks

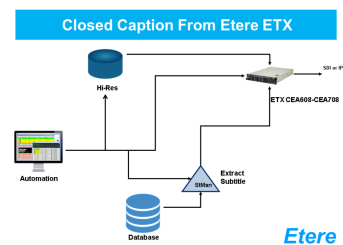
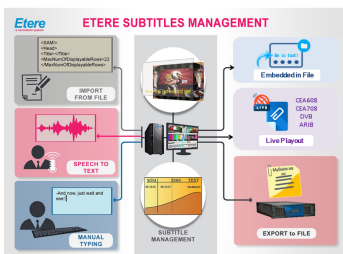
### Scheduling System

Etere Automation comes with an integrated scheduling system based on SQL, where [Etere Scheduling](#) is the Automation multifunctional editor used to create sophisticated schedules. Etere Scheduling gives broadcasters the freedom in scheduling programs, providing simulations, analysis and high and low resolution previews. The schedule editor is frame accurate, and operators no longer have to deal with fillings or cuts.

### Multi-Channel Control

Multi-channel control makes schedule management of multiple stations easy

- ◆ Several stations can be distinguished using logos
- ◆ All events can be previewed and their actual duration displayed
- ◆ Easily highlight different programs on different channels
- ◆ Programs can be find at first glance thanks to an efficient colors association
- ◆ Each status and warning message uses different colors
- ◆ Highlighted events indicates anomalies that need to be dealt with before broadcasting
- ◆ In case an excessive number of warning messages, the [Etere Technical Support](#) team takes over, providing a cross-check service by means of the SNMP workstation



### Etere Subtitle Management

[Etere Subtitle Management](#) is designed to manage different types of automated workflows simultaneously with a distributed architecture and high redundancy for a fault resilient performance. It is also able to automatically process high-quality subtitle input files and add them to the associated media platform/standards.

◆ **Open Subtitling with Etere STMan:** Open subtitles are added into the visible part of the video image. From Etere Subtitle Management to Etere Scheduling and Etere Automation. Subsequently, Etere STMan drives a Character Generator to insert subtitling in the video. The free CG licence is also included in Etere ETX. Etere STman allows broadcasters to easily manage subtitles used within the station with enhanced cost efficiency, flexibility, enhanced monitoring capabilities

◆ **Closed Subtitling (VBI or VANC):** Etere workflow drives a transcoder to embed subtitling in VBI or VANC data. Etere Workflow connects directly with Etere subtitling management to retrieve the correct multi-language data to be included in VBI or VANC space

◆ **Closed Subtitling (LINE 21/Teletext):** Etere workflow drives Etere CC inserter process which creates the data in the correct format to be inserted in the video stream

◆ **Closed Subtitling: Digital Video Broadcasting(DVB):** Multi-language Subtitles are inserted in a DVB stream using ETERE DVB inserter. The workflow includes Etere Subtitle Management to [Etere Scheduling](#), [Etere Automation](#) and subsequently [Etere STMan](#) which drives the Etere DVB inserter to create (in real-time) the stream to be inserted in the DVB stream by the multiplexer. Etere STman enables easy management of subtitles combined with enhanced cost efficiency, flexibility & monitoring capabilities