

# Etere Radio-Live

Etere Radio-Live offers a fully automated and innovative radio system to support all aspects of Radio TV management including the production of live shows, advertisement management and integration with social media.



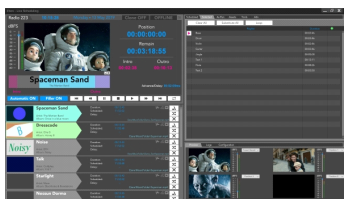
(Etere logo)



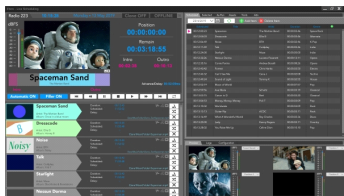
(Radio Live)

Present radio in a more effective and cost-efficient way with Etere Radio-Live, an innovative all-in-one visual radio automation software that is able to manage live video based on IP technology. It integrates the complete workflow of radio TV broadcast features into a single software, including the process of playout, graphics generator and mixer video of up to 6 external inputs. It also allows advertising with the overlapping of graphics for single clip as well as entire categories. Radio programming and shows can be screened simultaneously on Radio and TV without the associated high costs. It is extremely easy to migrate to Etere Radio-Live even without the expertise of TV production.

Etere Radio-Live is a highly reliable, automated and user-friendly software that is designed to streamline your operations and transform your radio station into a multi-functional channel that is capable of broadcasting music, video clips, live video and commercials. It empowers users to present radio programs in a video format on multiple platforms including new media platforms such as smartphone, tablet, web browser and smart TV. Radio-Live provides a simplified and effective platform to manage the complete functions of audio for radio television including playout, streaming, commercials planning, scheduling, recording, editing and post production. Users can configure pre-set playlists, perform unlimited preview of audio and video, interface with GPI, control surfaces and serial controllers. Radio-Live is a visual radio that broadcasts both radio programming and television simultaneously without the high costs associated with traditional TV productions. Radio-Live is also highly mobile with the flexibility to enhance a station's reach across borders easily.



(Etere Radio Live)



(Etere Radio Live)

### Music Scheduling

With Etere Radio-Live, users can reload a schedule, load another playlist, monitor in real-time the markings of clips already scheduled as well as perform the reconciliation of transmissions.

### All-in-One Scheduling

- ◆ Precise scheduling selection
- ◆ Song selection based on customisable criteria
- ◆ Manage scheduling for external devices
- ◆ External device management TCP/IP, Serial, Gpio (matrix switches, audio processors, video processors, remote control)
- ◆ Set rotation rules
- ◆ Customisable time marker
- ◆ Preset the complete schedule for the day
- ◆ Unlimited template scheduler
- ◆ Manage live commercial scheduling
- ◆ Set planning criteria for specific timetable
- ◆ Generate scheduling reports and gain insights with audience statistics
- ◆ Manage direct and live streaming
- ◆ Option for manual editing of schedule advertising
- ◆ Define programming periods with rotation option
- ◆ Edit fade and mix between tracks
- ◆ Manage exclusion tracks

- ◆ Clock-based scheduling
- ◆ Audio recording and editing
- ◆ Real-time graphics control
- ◆ Supports parametric flash animations
- ◆ Edit markin and markout in real-time
- ◆ Monitor live events
- ◆ Create advertising banner
- ◆ Graphic layout management
- ◆ PAL or NTSC video format



---

### Key Features

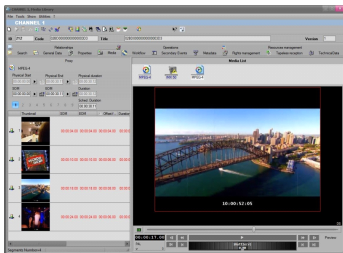
- ◆ Playout, graphics generator, scheduling
- ◆ Automatic video switching and voice detection
- ◆ Manage up to 6 external inputs
- ◆ Up to 100 preset graphics layout to select from
- ◆ View and download transmission logs
- ◆ Control panel for external devices including TCP/IP, Serial, Gpio (matrix, switches, audio processors, video processors, remote control)
- ◆ Automatic frame management
- ◆ Unlimited preview of audio and video
- ◆ Multi-channel record and playback capabilities
- ◆ High integrative with audio consoles, control surfaces and serial controllers
- ◆ Advertisement planning, scheduling and management
- ◆ Supports surround sound 5.1/7.1 audio into HDTV broadcasts via analog, AES, AoIP, and MADI



---

### Web and Desktop

Etere Radio expands the reach of your brand and enhances the experience of your audiences with its social media and online integration. The software can be integrated with both desktop and web sources including video calls, video clips from social media sites as well as social media integration with Facebook and Twitter. In today's digital world, Etere keeps your facilities competitive with features that enables users to discover and share new music online with their social groups.



---

### Integrated Commercial Graphics Management

Etere understands the potential of a great graphics management system. That is why it provides users with a professional media library with the full flexibility to generate and manage unlimited graphics with an integrated media library. Operators can save time and costs in searching for graphics with an effective and centralized graphics management with real-time updates. The software also comes with ready-to-use graphic layout management for a faster setup. Etere is able to manage commercial graphics in real-time including preview and approval for live playout. Etere integrates real-time sharing of data with the ability to select, delete and view multiple graphics without hardware requirements.



---

### Live Events Management

Etere combines an all-in-one solution that allows users to manage in real-time the complete controls of graphics and automatic scheduling of live events. Operators can reload a schedule, load alternative playlists, check live events, manage graphics in real-time and interact with channel audience through the real-time interchange of data. Advanced controls include the exclusion of period tracks, song selection based on set criteria, time marker and stop set management, track rotation rules and multiple filters for different selection.