

Transport-Stream Analyzer Software

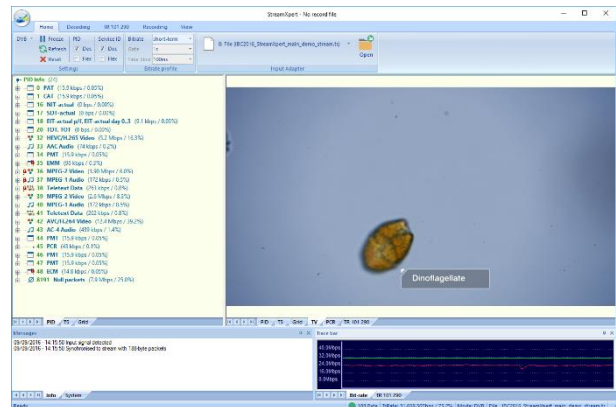
- Full decoding of DVB/SI and ATSC/PSIP
- Real-time TR 101 290 monitoring
- SD/HD live decoding; PCR analysis

FEATURES

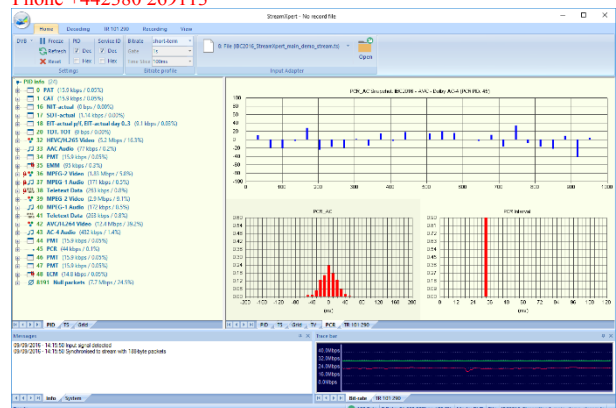
- Real-time and offline analysis of transport streams with intuitive user interface
- Deep decoding of tables and descriptors with customizable templates for decoding of custom tables and descriptors
- Integrated video and audio decoder supporting all industry-standard streams including MPEG-2, AVC and HEVC video and MPEG-1/2, AAC, MPEG-H, AC-3/AC-4 audio
- OTT analysis HTTP Smooth Streaming and MPEG-DASH manifests visualization
- User-definable TR 101 290 templates
- Analysis of TS-over-IP streams via DTA-2160/2162 or local network port

APPLICATIONS

- The world's most cost-effective and user-friendly transport-stream analyzer
- Test and validation of equipment with transport-stream output, e.g. multiplexers
- Quality monitoring of transport streams in studios, head ends, etc.



For more information or to buy these products please contact Carol or Terry at NyeTec Limited.
 Email: sales@nyetec.com
 Phone +442380 269113



SUPPORTED INPUT ADAPTERS

Signal Type	Supported Adapters
DVB-ASI	DTA-115, 145, 160, 2144B, 2145 DTA-2152, 2154, 2160, 2172, 2174 DTA-2175, 2178, 2179, 2195 DTU-245B; DTE-3120
DVB-SPI	DTA-122, 2142
Receivers	DTA-2131, 2132, 2136, 2137C, 2138, DTA-2139; DTU-236A, 238; DTE-3137
TS over IP	DTA-160, 2160, 2162, PC NIC

PC REQUIREMENTS

Platform	Windows 7,8,10 Windows Server 12,16,19
Processor*	Core i5 4 th generation minimum Core i7 4 th generation recommended

* Or equivalent AMD processor

RELATED PRODUCTS

Type	Description
DTU-245-SXP	ASI/SD-SDI input+output for USB-2 with StreamXpert® 2.0 stream analyzer and StreamXpress® player
DTC-335-SY	SdEye® – SDI analyzer software
DTC-720-XP	Xpect® Mosaic – 24/7 transport-stream monitoring and multiviewer

ORDERING INFORMATION

Type	Description
DTC-320-SX	StreamXpert® TS analyzer
DTC-320-NIC	StreamXpert® for PC NIC (dongle)

Please refer to www.dektec.com for the latest pricing and a list of distributors and resellers.